

2011

YRALIS

CONNECTICUT AREA ONE-DESIGN CHAMPIONSHIPS

*To compete a boat must be owned by or chartered to a member of YRALIS
Membership in US Sailing Association is encouraged.*

NOTICE OF RACE SAILING INSTRUCTIONS

DATE	SPONSORING CLUB	DATE	SPONSORING CLUB
Sunday, May 22	Riverside (E, L, I)*	Sunday, July 24	Indian Harbor (E, L, I)
Sunday, June 5	Riverside (E, L, I)	Sunday, July 31	OGYC (E, L, I)
Sunday, June 12	Indian Harbor (E, L, I)	Sunday, Aug. 14	Riverside (E, L, I)
Sunday, June 26	Belle Haven (E, L, I)	Sunday, Aug. 21	Belle Haven (E, L, I)
Sunday, July 3	Indian Harbor (E, L, I)	Sunday, Sept. 11	Indian Harbor (E, I)
Sunday, July 10	Belle Haven (E, L, I)	Sunday, Sept. 18	OGYC (E, L, I)
Sunday, July 17	Riverside (E, L, I)	Sunday, Sept. 25	OGYC (E, L, I)

*"E" indicates that the Etchells class is anticipating racing that day; "I" indicates the Ideal 18 class is anticipating racing that day; "L" indicates the Laser class is anticipating racing that day.

CLUB	TELEPHONE	CHAIRMAN	EMAIL
Belle Haven	(203) 861-5353	Edward Nunes	nunesed@pi.cpmc.columbia.edu
Old Greenwich Yacht Club	(203) 637-3810	Tom Hagan	Thomas.Hagan@rbs.com
Indian Harbor	(203) 869-2484	Craig Reynolds	creynolds1723@yahoo.com
Riverside	(203) 637-1706	Mark Parry/Jerry Cole	ryracecommittee@yahoo.com

FLEET CAPTAINS

Etchells	Karen Varbaro	Karen.Varbaro@schaeffler.com
Ideal 18s	Tom Hagan	Thomas.Hagan@rbs.com
Lasers	David Kubik	dkubik@bkskarch.com
Shields	Rick Hendee	rickhendee@optonline.net
Vipers	Jonathan Nye	jonathan.nye@alliancebernstein.com

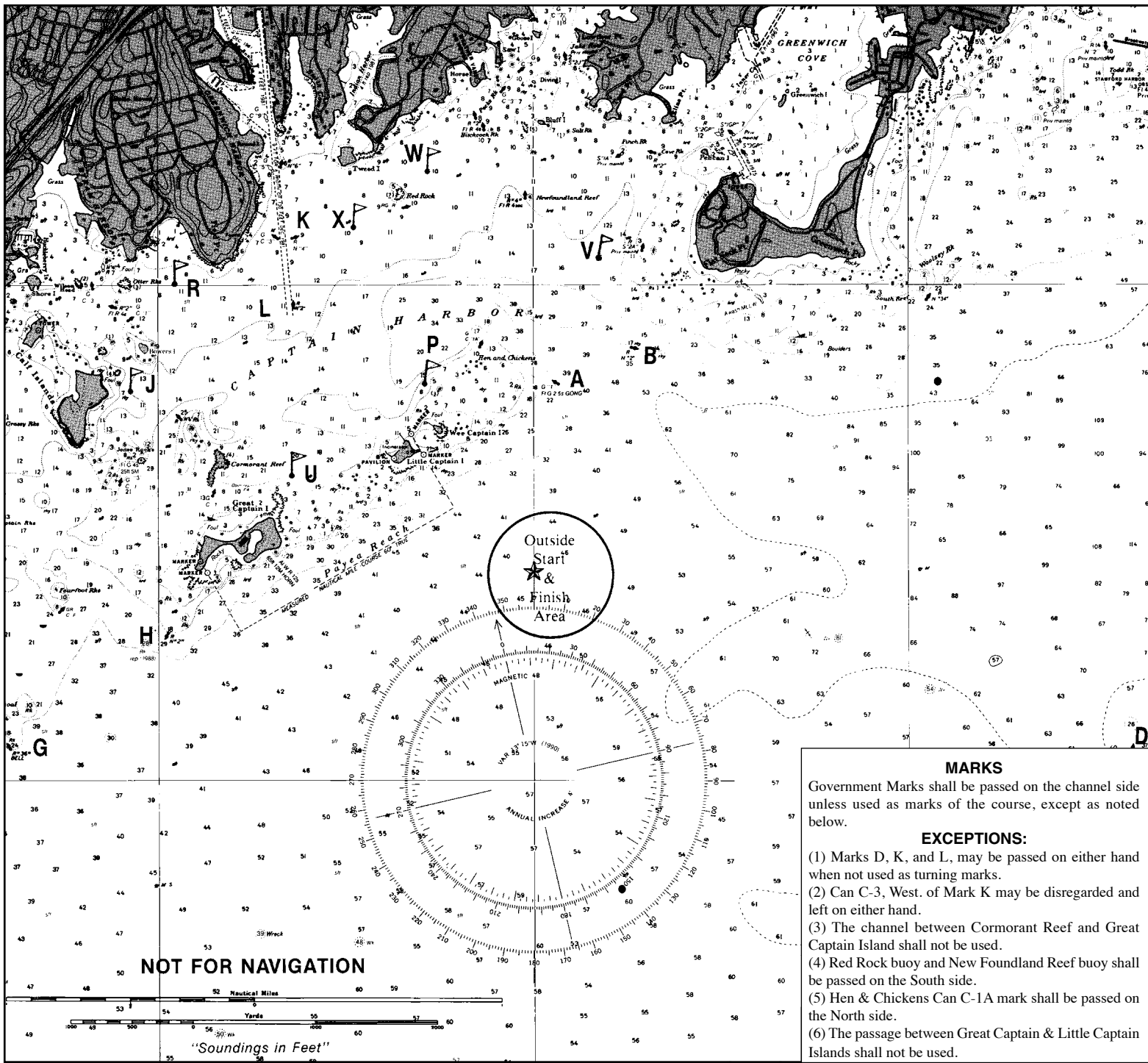
STARTING AREA AND TIMES

<u>Class</u>	<u>Fleet</u>	<u>First Warning</u>
1	Etchells	1430
2	Ideal 18s	1440
3	Lasers	1450
4	Others	1500

First Warning for other classes on any race day will be after 1400 at the discretion of the Race Committee.

The Starting Area will be inside Captain Harbor. On days on which the Laser Class is not expected to race, the Race Committee may move the Starting Area south of Mark "A" by displaying code flag "L" and announcing their intentions on VHF channel 72.

PLEASE SAVE THIS CIRCULAR



MARKS
 Government Marks shall be passed on the channel side unless used as marks of the course, except as noted below.

EXCEPTIONS:

- (1) Marks D, K, and L, may be passed on either hand when not used as turning marks.
- (2) Can C-3, West of Mark K may be disregarded and left on either hand.
- (3) The channel between Cormorant Reef and Great Captain Island shall not be used.
- (4) Red Rock buoy and New Foundland Reef buoy shall be passed on the South side.
- (5) Hen & Chickens Can C-1A mark shall be passed on the North side.
- (6) The passage between Great Captain & Little Captain Islands shall not be used.

- A** Bell "1" (flasher) Little Capt. Is. E. Reef.
- B** Red Nun "2," Flat Neck Point.
- C** Special mark, approximately 1 1/2 mi. to windward of start. Committee boat will indicate magnetic bearing.
- D** Red Gong "32-A" (flasher) mid-channel buoy.
- G** Red Bell "36," Bluefish Shoal.
- H** Red Nun "2," Great Captain Island west reef.

- J** Special Indian Harbor mark off Calf Island.
- K** Red Nun "4," Greenwich Hbr.
- L** Red Nun "2," Greenwich Hbr.
- M** Special reaching mark, positioned on a line which is an extension of the starting line.
- N** Special mark, approximately 1/2 mi. to leeward of the start.
- O** Special Mark, approximately 100 feet to windward of the starting line.

- P** Special Riverside mark North of Wee Captain Is.
- Q** Special mark approx. 1/4 mi. to leeward of the start.
- S** Special mark, approximately 3/4 mi. to windward of start. Committee boat will indicate magnetic bearing.
- T** Special mark on the opposite side of the Committee Boat from the starting line; may be used as a rounding mark and/or the finishing mark.
- U** Special Indian Harbor mark NNE of Great Captain Island Light.

- V** Special Riverside mark west of Sugar Boat.
- W** Special Riverside mark 1/4 mi. ENE of Red Rock.
- X** Special Indian Harbor mark SW of Tweed Is.
- Y** Special mark approx. 1/2 mi. to windward of start. Committee boat will indicate magnetic bearing.
- Z** Special mark approx. 1 mi. to windward of start. Committee boat will indicate magnetic bearing.

THE START: Races for the Etchells and all classes other than the Ideal 18s and Lasers shall be started in accordance with RRS 26, using numeral pennant #1 as the class flag for the Etchells. The Ideal 18 and Laser classes will be started using the sequence described in RRS Appendix S, which may be modified at the discretion of the Race Committee to be 2 minutes in length.

COURSES: Courses will be signaled by Class Number. Courses will generally be windward/leeward and consist of one or more Government, YRA or Special Marks. Special marks will be yellow, red or orange. Marks will be signalled in order from top to bottom as shown above. All marks signalled must be left on the same hand as starting mark.

SAMPLE COURSE BOARD

I	II	III	IV
Y	Y	F	Z
T	Q	C	N
Y	2	F	3
N			

- 2 — following Course Signals means twice around.
- 3 — following Course Signals means three times around.

Courses for the Ideal 18 and Laser classes shall be described verbally by the Race Committee prior to the warning signal for each race, and will consist of inflatable marks or other marks as designated verbally by the Race Committee

Except when finishing or in the case of an individual recall, after starting, if any part of the hull or crew passes through the start or the finish line, the race committee shall disqualify that boat without a hearing.

A boat that passes north of Red Rock buoy or New Foundland Reef buoy or south of Hens and Chickens Can C-1A or Cormorant Reef N4 shall be deemed to have not sailed the course and may be protested by another boat. If observed having done so by the race committee, such boat shall be disqualified without a hearing. This changes rules 60.2 and 63.1.

Multiple races are planned each day. Generally, races will not be started after 1700.

START TIME LIMIT: If the warning for the first start of the first division has not been displayed by 1600, all races for that day are cancelled.

FINISH TIME LIMIT: The finish of one boat in the Etchells class within 90 minutes of the start constitutes a race for that class. Boats that fail to finish within 15 minutes of the first boat in her class that sails the course and finishes will be scored Time Limit Expired and be awarded a finish equal to the last boat that finished within the time limit plus two. This changes rules 35, A4 and A5.

THE STARTING LINE will be between a yellow flag on the Committee Boat and an adjacent mark. If a “keep away” bouy is deployed from the signal boat, the buoy shall be deemed part of the single boat.

Boats whose warning signal has not been made shall avoid the starting area during the starting sequence for other races. Failure to do so may result in disqualification by the Race Committee without a hearing. This changes rules 60.2 and 63.1.

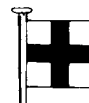
A boat starting later than five minutes after her starting signal will be scored “did not start.” This changes rule A4.

FREQUENTLY USED SIGNALS

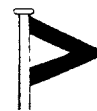
ON STATION AT FINISH
(1 Blue Shape.)



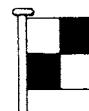
INDIVIDUAL RECALL
(Code Flag “X” and one sound signal). Individual recalls. The race committee will also attempt to hail the boat’s sail numbers.



GENERAL RECALL
(First Substitute and 2 sound signals). Entire Class recalled for new start. A new Preparatory signal will be made one minute after this signal is lowered with one sound signal. The starts for succeeding classes will be postponed accordingly.



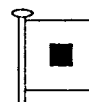
NOTIFICATION
(Code Flag “L”). Follow Committee boat to new starting area. When flown at the finish of a race, another start is planned.*



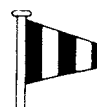
COURSE CHANGE AFTER START
(Code Flag “C” and repetitive sound signals). New mark designation will be identified by a race committee boat near the mark beginning the leg being changed before the leading boat has begun the leg, although the new mark may not yet be in position.



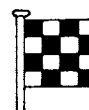
SHORTENED COURSE
(Code Flag “S” and 2 sound signals). At a rounding Mark, course shortened, and race ends at this mark.*



POSTPONEMENT
(Answering Pennant and 2 sound signals). All Races not started are postponed. The Warning signal will be made one minute after this signal is lowered with one sound signal.



ABANDONMENT AND RESAIL
(Code flag “N” and 3 sound signals). All races in progress are abandoned and will shortly be resailed. The warning signal will be made one minute after this signal is lowered with one sound signal.*



ABANDONMENT (CANCELLATION)
(Code Flag “N” over “A” and 3 sound signals.) All Races are abandoned for the day.*



*When displayed with Class signal(s), applies to the designated Classes only.

MEMBER CLUBS

AMERICAN
AROUND LONG ISLAND
BEACH POINT
BELLE HAVEN
BLACK ROCK
BREAKWATER IRREGULARS
CAN ONE ASSOC.
CEDAR POINT
CENTERPORT
CITY ISLAND
COLD SPRING HARBOR
THE CORINTHIANS
C&C SAILING
COW BAY CRUISING
DOUGLSTON
EASTCHESTER BAY
ECHO BAY
FROSTBITE
GREENHAVEN
HALLOWEEN
HARLEM
HEMPSTEAD HARBOUR
HORSESHOE HARBOR
HUGUENOT
HUNTINGTON
INDIAN HARBOR
LARCHMONT
LARCHMONT SHORE
LLOYD HARBOR
MAMARONECK FROSTBITE
MANHASSET BAY
MARITIME SAILING SQUARDON
MASTHEAD COVE
MORRIS YACHT & BEACH
MOUNT SINAI
MUSCETA COVE
NEW YORK A.C.
NEW YORK SAILING
NEW YORK
NOROTON
NORTHPORT
NORTH SHORE
NORWALK
OLD GREENWICH
ORIENTA
ORIENTA BEACH
PEQUOT
PLAMDOME FIELD & MARINE
PORT WASHINGTON
RIVERSIDE
SAGAMORE
SAUGATUCK HARBOR
SEA CLIFF
SEAWANAKA CORINTHIAN
SETAUKET
SHELDRAKE
SHORE & COUNTRY
SOUTH MINNEFORD
SPRITE ISLAND
STAMFORD
STAMFORD POWER SQUADRON
STEPPINGSTONE
STORM TRYSAIL
STUYVESANT
U.S. MERCHANT MARINE ACADEMY

THE FINISHING LINE, shall be on the opposite side of the Committee Boat from the starting line between a staff displaying a colored flag on the Committee Boat and special mark T. Boats that withdraw from a race shall inform the Race Committee of the sponsoring Club as soon as possible either by hailing or by telephone.

RACING RULES: Racing will be governed by the rules as defined in the Racing Rules of Sailing and as modified herein, or by applicable Class Rules and local Fleet Rules.

LIFE JACKETS: It is the responsibility of skippers and crews in all Classes to wear U.S. Coast Guard approved life jackets whenever conditions warrant. Competitors in the Laser and Viper classes must wear a personal floatation device while racing.

PROTESTS AND REQUESTS FOR REDRESS: Protests and requests for redress shall be made in accordance with RRS 61 and 62 with the following modifications. The intention to protest or seek redress shall be hailed to the Race Committee immediately after finishing. A protest or request must be put in writing and delivered or postmarked to the sponsoring committee no later than 2000 on the day of the race. The US Sailing Association Standard Protest Form is preferred. A hearing will be held at the sponsoring club at 2100 on the Wednesday following the race unless all parties shall have previously agreed to an alternate date and time. Appeals must be filed with US Sailing. RRS 44.1 is amended so that a two-turn penalty is replaced by a one-turn penalty.

CONDITION OF PARTICIPATION: As a condition of the participation of any boat in any race or related activity sponsored or undertaken by YRA or its member clubs or organizations, the owner, helmsman and each crew member agree that the safety of the boat and her crew and the decision whether or not to start or continue a race is solely their responsibility, and each of them waives all claims which he or she, or any heir, representative, successor or assignee, may have against YRA, its member clubs and organizations, and their respective officers, directors, members, committees, employees or agents, arising out of or in any way connected with participation in such race or activity.

KEEP AWAY BUOY: The Race Committee may deploy a limit or "keep away" buoy from a Committee boat. Competitors shall not touch or sail between the buoy and the boat. When the boat deploying a limit buoy is a starting mark or another mark of the course, the buoy shall be a part of the mark. Any boat that touches the buoy or passes between the buoy and the Committee Boat may exonerate herself in accordance with RRS 44.1 (360° turn).

VHF SIGNALS AND BROADCASTS: The Race Committee may postpone or abandon racing by announcement on VHF channel 72 at or before 1400. Competitors may call the Race Committee or the Dock of the Sponsoring Club on the same channel regarding postponement or abandonment. The warning signal after a postponement made this way will be made more than one hour after announcement that the postponement has ended. The committee may announce abandonment before then. In addition to signaling individual recalls in accordance with RRS 29.1, the Race Committee may broadcast the sail numbers of any boats identified as OCS, or otherwise in violation of applicable starting procedures, on VHF channel 72. Failure to make such a hail, failure of a boat to hear such a hail, or the order of hailing, shall not be grounds for redress. Competitors may not interfere with such hails by calling the Race Committee.

YACHT RACING ASSOCIATION
of
LONG ISLAND SOUND
HEADQUARTERS
455 Main Street, Port Washington, N.Y. 11050
(516) 767-9240

For additional information,
Other YRA Schedules, Scores, Bay Racing Activity, Distance Schedules, etc.
Phone or Write
Yacht Racing Association of Long Island Sound, Inc.
www.yralis.org